



Black Mountain Golf Club - property developments





Town Houses:

- Four story Town Houses, 220 sqm with 3 bedrooms.
- Located along hole number nine of the championship course.
- Price: 12.9 million Baht.



Four Story Villas:

- Located between the security check and the condominiums.
- From 49 million Baht



Condominiums:

- From 6.9 million Baht



Course-side Villas:

- 2 story villas with 4 bedrooms
From 39 million Baht.



West Course Twin House:

- 2 story villas with 4 bedrooms.
From 19.9 million Baht.














North Point Villas - single story:

- From 29.9 million Baht

All of these properties include one lifetime golf membership

Master Plan



-  Black Mountain Living
-  Sansara Senior Living
-  Hua Hin International School
-  Retail
-  MiniGolf/Tennis/Paddle Tennis/VolleyBall
-  Black Mountain Resort Villas
-  Water Park/Wakeboard
-  Black Mountain Clubhouse
-  EAST COURSE
-  NORTH COURSE
-  WEST COURSE

Property Locations



North Point Villas - single story

From 29.9 Million Baht



North Point Villas - single story



AREA INFORMATION (3 BEDROOM)	
BEDROOM 1 (MASTER)	29 sq.m
BATHROOM 1 (MASTER)	15 sq.m
BEDROOM 2	19 sq.m
BATHROOM 2	7 sq.m
BEDROOM 3	21 sq.m
BATHROOM 3	6 sq.m
ENTRANCE	20 sq.m
LIVING & KITCHEN	92 sq.m
TERRACE	276 sq.m
PARKING AREA	37 sq.m
LAUNDRY	11 sq.m
GUEST TOILET	5 sq.m
TOTAL AREA	538 sq.m



West Course Twin House



From 19.9 Million Baht

West Course Twin House (4 Bedroom)



AREA INFORMATION (4 BEDROOM)			
ENTRANCE	10 sq.m	BATHROOM 2	6 sq.m
LIVING AND KITCHEN	73 sq.m	BEDROOM 3	23 sq.m
TERRACE	78 sq.m	BATHROOM 3	5 sq.m
PARKING	41 sq.m	BEDROOM 4	24 sq.m
GUEST TOILET	3 sq.m	BATHROOM 4	9 sq.m
BEDROOM 1	27 sq.m	CORRIDOR	14 sq.m
BATHROOM 1	9 sq.m	BALCONY	42 sq.m
BEDROOM 2	19 sq.m	TOTAL AREA	430 sq.m



GROUND FLOOR



FIRST FLOOR



PLOT PLAN

2 Story Villa

39 Million Baht



2 Story Villa



2 STORY VILLA - HOLE 10

UPPER FLOOR

FOYER	12.00 sq.m.
LIVING AREA 2	21.28 sq.m.
KITCHEN AREA	26.35 sq.m.
DINING AREA	23.69 sq.m.
BEDROOM 4	27.10 sq.m.
BATHROOM 5	03.50 sq.m.
STORAGE	12.61 sq.m.
TERRACE POOL	100.00 sq.m.
SWIMMING POOL	40.20 sq.m.
CAR PARKING	30.80 sq.m.

2ND FLOOR AREA

297.53 sq.m.

2 Story Villa



2 STORY VILLA - HOLE 10

GROUND FLOOR

LIVING AREA 1	37.34 sq.m.
BEDROOM 1	39.13 sq.m.
BEDROOM 2	27.03 sq.m.
BEDROOM 3	22.42 sq.m.
BATHROOM 1 (WC 1)	19.66 sq.m.
BATHROOM 2 (WC 2)	14.72 sq.m.
BATHROOM 3 (WC 3)	00.00 sq.m.
BATHROOM 4 (WC 4)	11.80 sq.m.
TERRACE 1	34.00 sq.m.
TERRACE 2	09.55 sq.m.
STORAGE	5.23 sq.m.
Hallway	17.50 sq.m.

GROUND FLOOR AREA

238.38 sq.m.

4 Story Villas



49 Million Baht



4 Story Villas



GROUND FLOOR	
CAR PARK	50.40 m ²
LOBBY WINE CELLAR	53.00 m ²
MAID'S ROOM	16.00 m ²
BATHROOM 5	5.00 m ²
PUMP ROOM / FILTER	14.00 m ²
STAIRS (INT)	24.30 m ²
STAIRS (EXT)	8.00 m ²
LIFT	6.00 m ²
GROUND FLOOR AREA	176.70 m²



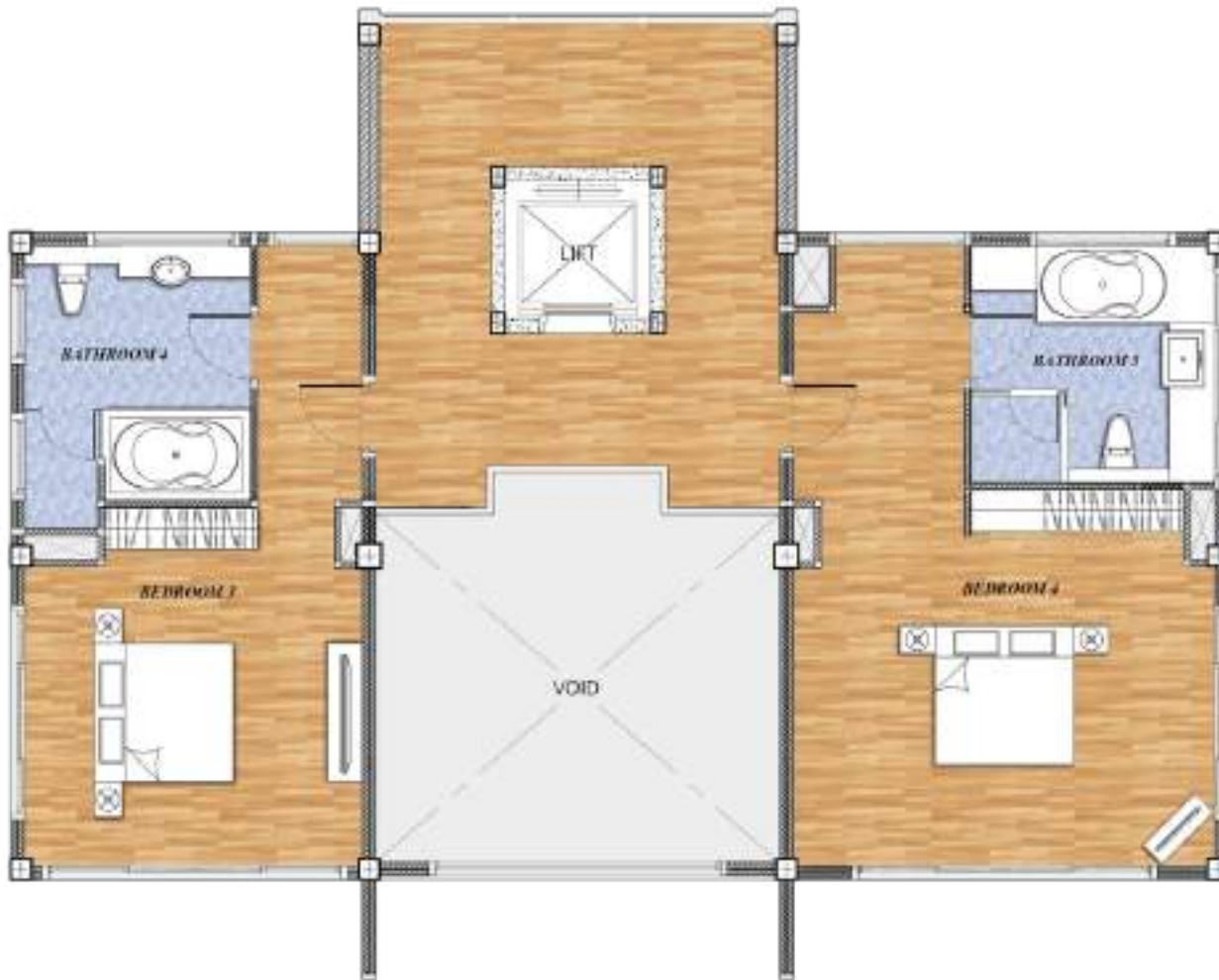
4 Story Villas



2 nd FLOOR	
STAIR ENTRANCE	32.00 m ²
KITCHEN & DINING AREA	43.00 m ²
RECEPTION	44.50 m ²
LIVING AREA	43.00 m ²
STAIRS	24.30 m ²
LIFT	6.00 m ²
POOL DECK	148.00 m ²
SWIMMING POOL	48.00 m ²
2nd FLOOR AREA	388.80 m²



4 Story Villas



3 rd FLOOR	
HALL	11.00 m ²
BEDROOM 2	31.50 m ²
BATHROOM 2	10.00 m ²
BEDROOM 3	31.50 m ²
BATHROOM 3	10.00 m ²
STAIRS	24.30 m ²
LIFT	6.00 m ²
3rd FLOOR AREA	124.30 m²



4 Story Villas



4 th FLOOR	
KITCHEN AREA	21.00 m ²
OFFICE MULTI-PURPOSE	23.00 m ²
BATHROOM 2	4.00 m ²
BEDROOM 1	27.30 m ²
WALK IN CLOSET	10.50 m ²
BATHROOM 1	14.00 m ²
SAUNA	2.80 m ²
STAIRS	24.30 m ²
LIFT	6.00 m ²
4th FLOOR AREA	132.90 m²
TOTAL VILLA AREA	822.70 m²





Town Houses

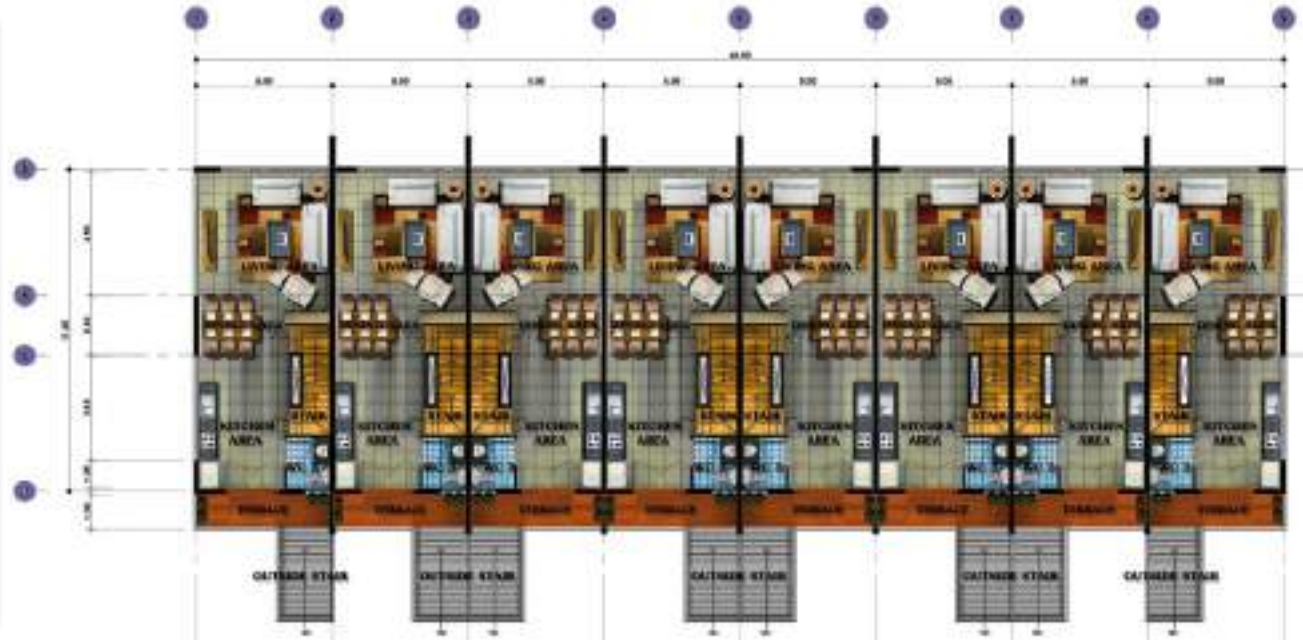
From 12.9 Million Baht





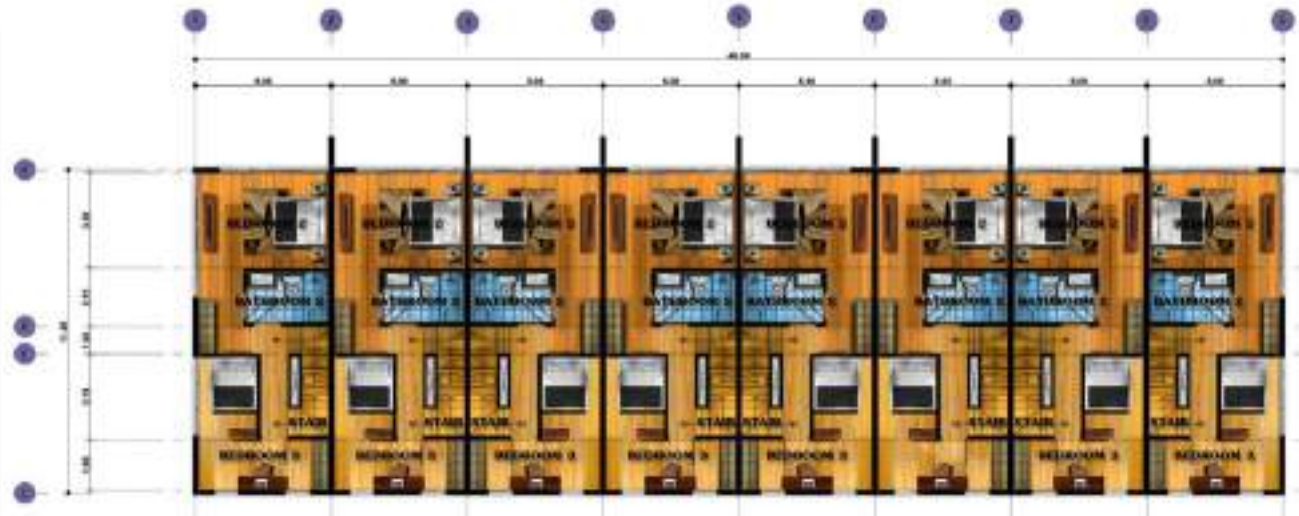
GROUND FLOOR	
PARKING	30.20 sq.m.
STAIR AREA	6.00 sq.m.
GROUND FLOOR AREA	36.20 sq.m.

Town Houses



2 nd FLOOR	
LIVING AREA	26.70 sq.m.
DINING & KITCHEN AREA	19.00 sq.m.
BATHROOM 3	3.40 sq.m.
STAIR AREA	6.80 sq.m.
TERRACE & OUTSIDE STAIRS	13.30 sq.m.
2nd FLOOR AREA	69.20 sq.m

Town Houses



3 rd FLOOR	
BEDROOM 2	22.00 sq.m.
BATHROOM 2	6.70 sq.m.
BEDROOM 3	15.40 sq.m.
STAIR & HALL AREA	11.00 sq.m.
3rd FLOOR AREA	55.10 sq.m.



The floor plan shows a symmetrical layout of 12 units. Each unit consists of a Master Bedroom, a second Bedroom, a Kitchen, a Living Room, a Dining Room, a Bathroom, and a Terrace. The units are arranged in two rows of six, separated by a central corridor. The plan includes dimensions for each room and overall building dimensions.

4 th FLOOR	
MASTER BEDROOM	16.20 sq.m.
BATHROOM 1	7.40 sq.m.
STAIR AREA	6.30 sq.m.
POOL DECK	14.30 sq.m.
POOL & OVER FLOW	15.40 sq.m.
4 th FLOOR AREA	59.60 sq.m.
TOTAL HOUSE AREA	220.1 sq.m

Condominiums

6.9 Million Baht



LUXURY CONDOMINIUM 143

AREA	SQM.
Master Bedroom	19.00
Master Bathroom	9.00
Guest Bedroom	19.10
Guest Bathroom	7.66
Living Area	20.40
Dining	16.17
Pantry	15.40
Storage	3.00
Terrace	32.95

Total Area 142.68 sqm.



Condominiums

10.9 Million Baht



LUXURY CONDOMINIUM 184



AREA	SQM.
Master Bedroom	24.00
Master Bathroom	7.21
Guest Bedroom	19.10
Guest Bathroom 1	7.57
Guest Bathroom 2	7.70
Guest Toilet	3.78
Living Area	20.40
Study Room	20.13
Dining	20.60
Pantry	10.68
Storage	3.05
Foyer	6.20
Terrace	33.85
Total Area	184.22 sqm.



No. 59 in Golf Digest's 2018 World Golf 100





Tel: 081-763-2200

Email: patrik@bmghuahin.com

www.blackmountainhuahin.com